

GEOPIER®

SRT® SYSTEM Slope Reinforcement Technology



The Geopier SRT® system is an efficient and cost-effective solution for the stabilization of new slopes and active slides up to 15 feet deep. SRT® is ideal for constrained right of ways and eliminates the need for massive earthwork and site disruption. The system is designed to stabilize slopes where the soil conditions consist of an upper zone of weathered, loose, soft or disturbed soil over a stable zone of soil or soft rock. The closely spaced Plate Pile™ elements form a series of horizontal barriers where the soil arches between the plates, forming a continuous line of resistance against downslope movement.

APPLICATIONS

- Slopes with active or impending slides
- Roadways
- Railroads
- Embankments
- Canals, creeks, rivers
- Commercial developments
- New slopes and excavations

DESIGN CONSIDERATIONS

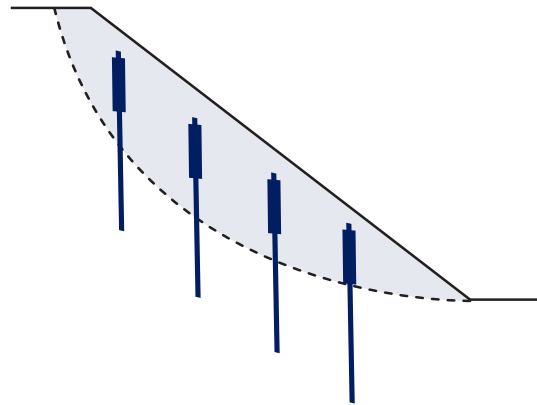
- Shallow slides typically less than 15+ft
- Plate Pile spacing based on soil conditions
- Piles are driven below grade, doesn't interfere with vegetation or present a hazard
- Environmentally friendly
- Materials are made in the USA

CONSTRUCTION CONSIDERATIONS

- Can be installed with an excavator and vibratory hammer
- Materials are readily available anywhere, resulting in lower shipping costs and shorter lead-times
- Often results in 20% to 50% cost savings compared to traditional alternatives
- Rapid installation process means shorter service interruptions

INSTALLATION PROCESS

Slide material is either replaced or reused and slope is re-established. The plate pile elements are then driven through unstable soil into a competent layer. This process is performed on or off track using an excavator. Piles are driven in an engineered pattern based on soil conditions and depth of slide.



Watch system installation videos at www.geopier.com

Whether you are an engineer, contractor, or owner - We can help.

For more information on Geopier solutions, call **800-371-7470**, visit www.geopier.com or email info@geopier.com

